



Pump Feeders



Custom Fabricating & Repair, Inc.

Marshfield, Wisconsin



Pump Feeder

A specialized material handling device consisting of a product hopper, an optional leveling ribbon, augering screw(s), a stuffing/packing chamber, a pump transition and positive displacement pump and drive. It is designed and constructed to accept, handle and convey thick viscous products for a variety of processing applications.

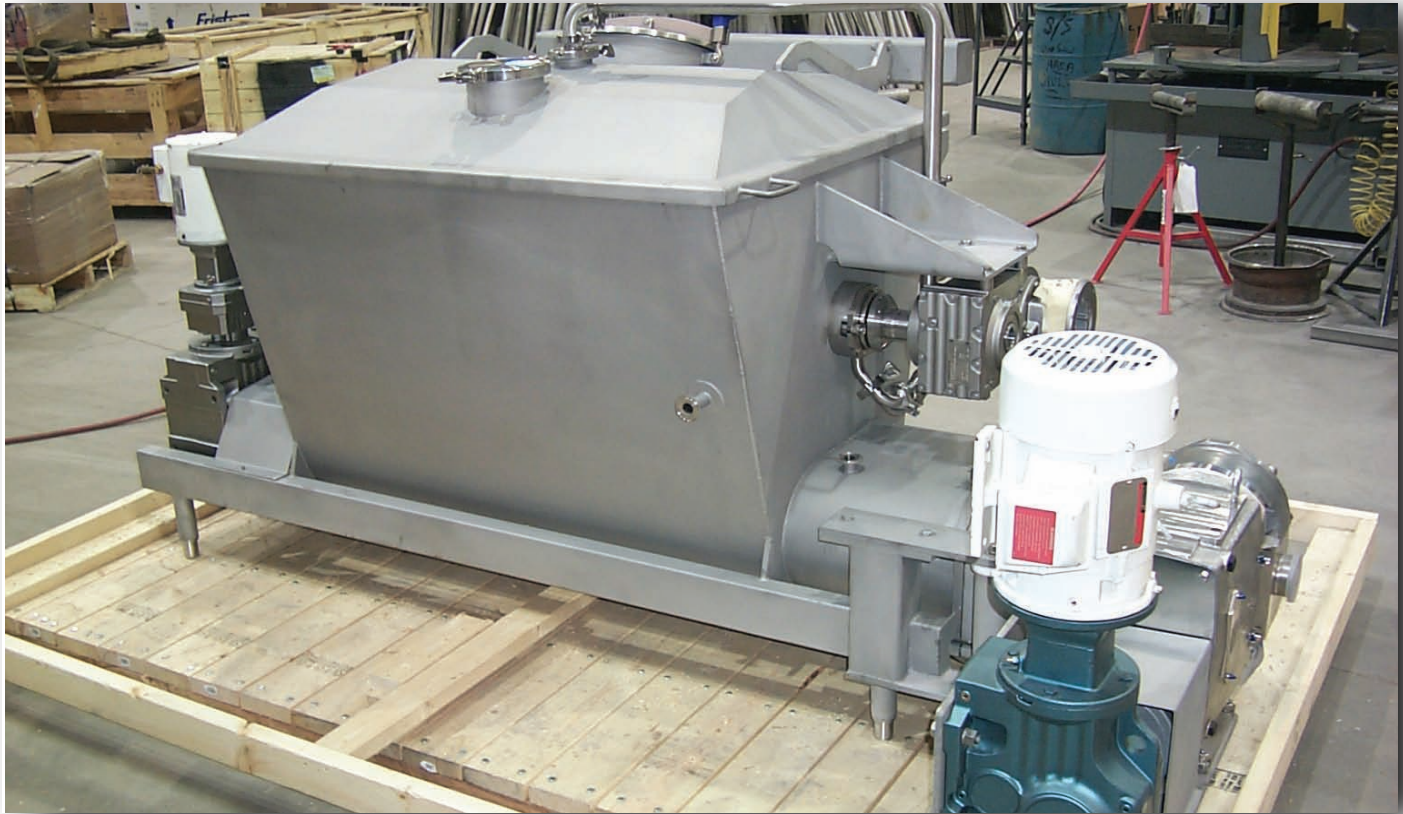




Features:

- Heavy duty stainless steel sanitary construction.
- 304 stainless steel tubular frame construction with adjustable sanitary legs or casters.
- Hopper and auger trough are formed 304 or 316 stainless with 1/2 inch end plates. Hopper capacities from 1 to 200 cubic feet.
- Augers from 4 inch to 18 inch in diameter. Multiple auger flight pitch available for specific applications.
- Leveling ribbons from 8 inch to 40 inch in diameter.
- Variety of seal options including: O-Ring, U-Cup, mechanical seals, and full CIP flush seals for augers and leveling ribbon.
- Available safety grating with interlocking safety switch provides full cover for hopper opening.
- Swing away pump transition for ease of inspection and maintenance.
- Severe duty and stainless steel motors available.
- CIP pump option recirculates rinse water through pump feeder for in-place cleanability.
- Control panels designed to customer specifications.
- Construction to meet USDA standards.
- Equipment designed to meet your unique processing applications.





Industries Served

DAIRY ■ FOOD ■ PHARMACEUTICAL ■ BEVERAGE
PAPER ■ CHEMICAL ■ WASTE WATER



Custom Fabricating & Repair, Inc.

1932 East 26th Street
P.O. Box 296
Marshfield, WI 54449

(800) 236-8773
Fax: 715-384-3768

Represented by:

